



THE TAINO COQUÍ WALL HANGING

The Puerto Rican coqui (pronounced ko-kee) is a small frog native to the island of Puerto Rico. It is about one inch long and can be brown, yellow, or green in color. Unlike many frogs, the coqui does not have webbed feet. The coqui has become an unofficial “mascot” and cultural symbol for the people of Puerto Rico.

The term “coqui” refers to the sound made by the males of the species calling to attract females and scare off other males. This nightly chorus can be heard throughout Puerto Rico, from dusk until dawn. The native Taino inhabitants of Puerto Rico were intrigued by the coqui and many stone engravings have been found on cave and cavern walls on the island.

The Taíno Coqui, has become an icon for anything Puerto Rican.



La Piedra Escrita en Jayuya Puerto Rico

I have only made this pattern once, as its' construction is time consuming. It has not been tested or tech-edited. So, if you try this and find any errors or have any suggestions on how to improve the final product, please let me know at mindandmuse@gmail.com.

MATERIALS:

- Yarn: 200 g dk weight cotton or cotton blend (or any size cotton blend.)
 - I used Yarn Art Jean (55% cotton/45% acrylic) in colorway 76 (light turquoise) and Mimosa brand yarn in black, 62% cotton 38% rayon.
- 3.25 mm hook (or hook to match the yarn you selected).
- Several stitch markers
- Yarn needle to weave in ends.

GAUGE: It has not been established for this pattern.

STITCHES/ABBREVIATIONS – The pattern is written in US terminology

- Ch: Chain
- C2C Corner to Corner blocks
- Sl st: Slip stitch
- Sc: Single crochet:
- Scbklp: single crochet in the back loop only

EXPERIENCE LEVEL

- Beginner looking for a challenge and above. You should refer to the chart provided, from time to time, to keep track of your work. If you have never done C2C, you will need to learn the technique in order to complete this project.

PROJECT NOTES:

- This pattern does not cover the C2C technique, but there are many tutorials available on the interwebs. For example, check out [this tutorial from the Make and Do Crew](#).
- This project is worked by first completing the C2C backdrop, then adding tassels and the rod loops at the tops. Feel free to modify the design by omitting or changing the tassels and rod loops.
- My completed backdrop (without tassels and rod loops) measured 21.5 in x 18.5 in.
- In the written instructions, **C1** refers to the color chosen for coqui body, and **C2** is the color chosen for the background where the coqui lays. You could choose a third color for the tassels and rod loops if you prefer.
- The project is worked diagonally starting at the bottom right and working towards the top left. As you work you alternate from left to right.
- The stitch pattern instructions and chart were created using Stitch Fiddle [Computer software]. (2015). <http://stitchfiddle.com> . Last accessed 8/29/2020

INSTRUCTIONS:

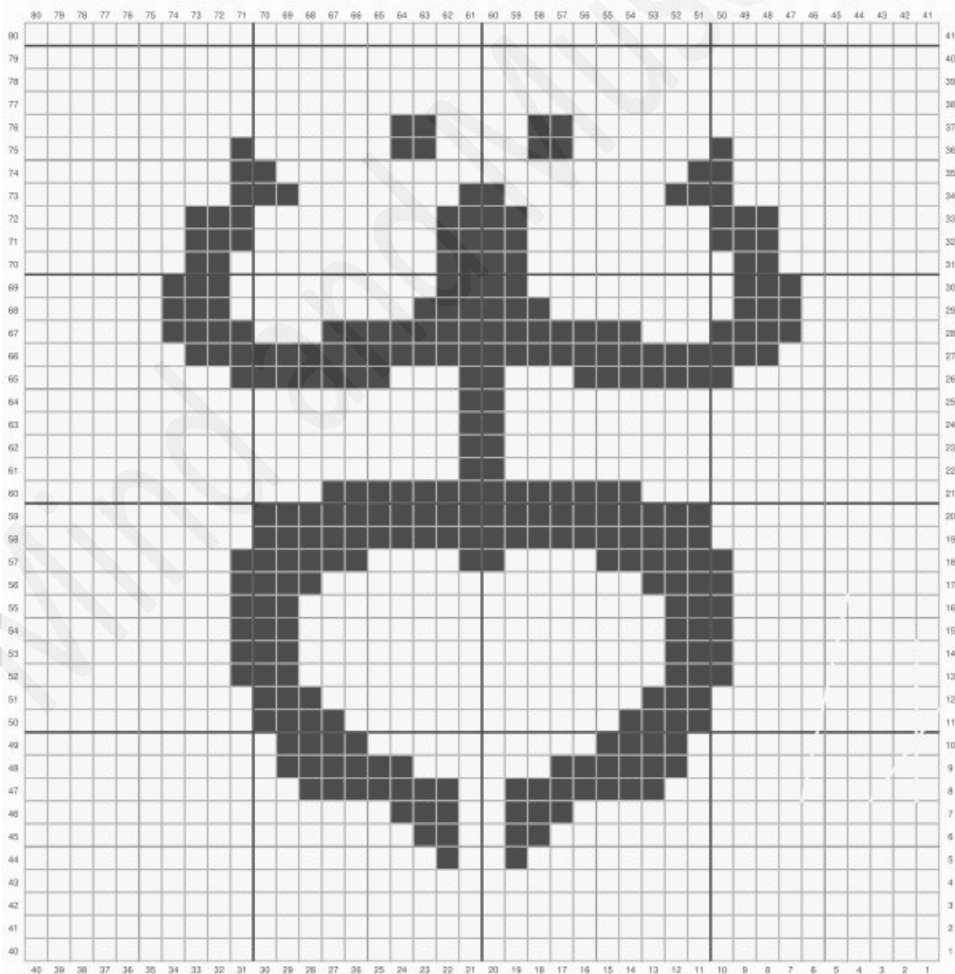
THE BACKDROP WRITTEN INSTRUCTIONS:

Checklist	Instructions
	→ Row 1 [WS]: C2
	← Row 2 [RS]: (C2) x 2
	→ Row 3 [WS]: (C2) x 3
	← Row 4 [RS]: (C2) x 4
	→ Row 5 [WS]: (C2) x 5
	← Row 6 [RS]: (C2) x 6
	→ Row 7 [WS]: (C2) x 7
	← Row 8 [RS]: (C2) x 8
	→ Row 9 [WS]: (C2) x 9
	← Row 10 [RS]: (C2) x 10
	→ Row 11 [WS]: (C2) x 11
	← Row 12 [RS]: (C2) x 12
	→ Row 13 [WS]: (C2) x 13
	← Row 14 [RS]: (C2) x 14
	→ Row 15 [WS]: (C2) x 15
	← Row 16 [RS]: (C2) x 16
	→ Row 17 [WS]: (C2) x 17
	← Row 18 [RS]: (C2) x 18
	→ Row 19 [WS]: (C2) x 19
	← Row 20 [RS]: (C2) x 11, (C1) x 2, (C2) x 7
	→ Row 21 [WS]: (C2) x 7, (C1) x 4, (C2) x 10
	← Row 22 [RS]: (C2) x 9, (C1) x 6, (C2) x 7
	→ Row 23 [WS]: (C2) x 4, (C1) x 10, (C2) x 9
	← Row 24 [RS]: (C2) x 9, (C1) x 10, (C2) x 5
	→ Row 25 [WS]: (C2) x 6, (C1) x 3, (C2) x 4, (C1) x 3, (C2) x 9
	← Row 26 [RS]: (C2) x 9, (C1) x 3, (C2) x 6, C1, (C2) x 2, C1, (C2) x 4
	→ Row 27 [WS]: (C2) x 5, C1, (C2) x 9, (C1) x 3, (C2) x 9
	← Row 28 [RS]: (C2) x 10, (C1) x 2, (C2) x 9, (C1) x 2, (C2) x 5
	→ Row 29 [WS]: (C2) x 6, (C1) x 2, (C2) x 8, (C1) x 3, (C2) x 10
	← Row 30 [RS]: (C2) x 10, (C1) x 3, (C2) x 9, (C1) x 2, (C2) x 6
	→ Row 31 [WS]: (C2) x 7, C1, (C2) x 9, (C1) x 3, (C2) x 11
	← Row 32 [RS]: (C2) x 12, (C1) x 3, (C2) x 8, (C1) x 2, (C2) x 7
	→ Row 33 [WS]: (C2) x 7, (C1) x 2, (C2) x 9, (C1) x 2, (C2) x 13
	← Row 34 [RS]: (C2) x 6, (C1) x 2, (C2) x 5, (C1) x 3, (C2) x 9, (C1) x 2, (C2) x 7
	→ Row 35 [WS]: (C2) x 7, (C1) x 3, (C2) x 8, (C1) x 3, (C2) x 4, (C1) x 4, (C2) x 6

Checklist	Instructions
	← Row 36 [RS]: (C2) x 6, (C1) x 5, (C2) x 4, (C1) x 3, (C2) x 8, (C1) x 2, (C2) x 8
	→ Row 37 [WS]: (C2) x 8, (C1) x 3, (C2) x 6, (C1) x 4, (C2) x 4, (C1) x 5, (C2) x 7
	← Row 38 [RS]: (C2) x 7, (C1) x 2, (C2) x 2, (C1) x 2, (C2) x 4, (C1) x 4, (C2) x 6, (C1) x 2, (C2) x 9
	→ Row 39 [WS]: (C2) x 10, (C1) x 2, (C2) x 6, (C1) x 3, (C2) x 4, (C1) x 2, (C2) x 3, (C1) x 2, (C2) x 7
	← Row 40 [RS]: (C2) x 7, (C1) x 2, (C2) x 4, (C1) x 2, (C2) x 4, (C1) x 3, (C2) x 6, (C1) x 2, (C2) x 10
	Corner
	→ Row 41 [WS]: (C2) x 10, (C1) x 2, (C2) x 5, (C1) x 4, (C2) x 3, (C1) x 3, (C2) x 3, (C1) x 2, (C2) x 8
	Corner
	← Row 42 [RS]: (C2) x 8, C1, (C2) x 4, (C1) x 2, (C2) x 3, (C1) x 5, (C2) x 4, (C1) x 2, (C2) x 10
	→ Row 43 [WS]: (C2) x 9, (C1) x 3, (C2) x 2, (C1) x 4, C2, (C1) x 2, (C2) x 2, (C1) x 2, (C2) x 5, C1, (C2) x 7
	← Row 44 [RS]: (C2) x 6, (C1) x 2, (C2) x 5, (C1) x 2, C2, (C1) x 2, (C2) x 2, (C1) x 8, (C2) x 9
	→ Row 45 [WS]: (C2) x 9, (C1) x 7, (C2) x 3, (C1) x 4, (C2) x 5, (C1) x 3, (C2) x 5
	← Row 46 [RS]: (C2) x 12, (C1) x 4, (C2) x 4, (C1) x 6, (C2) x 9
	→ Row 47 [WS]: (C2) x 9, (C1) x 5, (C2) x 5, (C1) x 3, (C2) x 12
	← Row 48 [RS]: (C2) x 11, (C1) x 4, (C2) x 6, (C1) x 3, (C2) x 9
	→ Row 49 [WS]: (C2) x 10, C1, (C2) x 6, (C1) x 5, (C2) x 10
	← Row 50 [RS]: (C2) x 9, (C1) x 7, (C2) x 15
	→ Row 51 [WS]: (C2) x 14, (C1) x 8, (C2) x 8
	← Row 52 [RS]: (C2) x 5, C1, (C2) x 2, (C1) x 3, (C2) x 2, (C1) x 3, (C2) x 13
	→ Row 53 [WS]: (C2) x 12, (C1) x 3, (C2) x 3, (C1) x 3, C2, (C1) x 2, (C2) x 4
	← Row 54 [RS]: (C2) x 4, C1, (C2) x 2, (C1) x 2, (C2) x 4, (C1) x 3, (C2) x 11
	→ Row 55 [WS]: (C2) x 10, (C1) x 2, (C2) x 14
	← Row 56 [RS]: (C2) x 14, (C1) x 2, (C2) x 9
	→ Row 57 [WS]: (C2) x 9, C1, (C2) x 14
	← Row 58 [RS]: (C2) x 5, C1, (C2) x 7, (C1) x 2, (C2) x 8
	→ Row 59 [WS]: (C2) x 7, (C1) x 2, (C2) x 7, (C1) x 2, (C2) x 4
	← Row 60 [RS]: (C2) x 4, C1, (C2) x 7, (C1) x 2, (C2) x 7
	→ Row 61 [WS]: (C2) x 6, (C1) x 3, (C2) x 11
	← Row 62 [RS]: (C2) x 7, C1, C2, (C1) x 4, (C2) x 6
	→ Row 63 [WS]: (C2) x 6, (C1) x 5, (C2) x 7
	← Row 64 [RS]: (C2) x 6, (C1) x 4, (C2) x 7
	→ Row 65 [WS]: (C2) x 7, C1, C2, C1, (C2) x 6
	← Row 66 [RS]: (C2) x 5, C1, (C2) x 9
	→ Row 67 [WS]: (C2) x 14

Checklist	Instructions
	← Row 68 [RS]: (C2) x 13
	→ Row 69 [WS]: (C2) x 12
	← Row 70 [RS]: (C2) x 11
	→ Row 71 [WS]: (C2) x 10
	← Row 72 [RS]: (C2) x 9
	→ Row 73 [WS]: (C2) x 8
	← Row 74 [RS]: (C2) x 7
	→ Row 75 [WS]: (C2) x 6
	← Row 76 [RS]: (C2) x 5
	→ Row 77 [WS]: (C2) x 4
	← Row 78 [RS]: (C2) x 3
	→ Row 79 [WS]: (C2) x 2
	← Row 80 [RS]: C2
	You may weave in all the ends from this part of your work if you like.

THE BACKDROP CHART:



SUGGESTIONS FOR FINISHING

TASSELS:

Make 6 - 8 large tassels and attach them, equally distributed, to the bottom of your backdrop.

ROD LOOPS:

1. Make 84 Sc evenly distributed along the top.
(Ch 1 of this part does NOT count as a stitch.)
2. Ch 1. Ch 17. Turn. Sc in a single loop starting in the 2nd Ch from hook. Sc in a single loop of the next 15 Ch. Sc2tog using the back loop of the last Ch and the next Sc from the top of your backdrop. Slst 1 and turn.
3. Sk Slst. Scbklp in each Sc up to the stitch before the last. Sc in the last Sc. Ch 1. Turn.
4. Scbklp in each Sc down to the stitch before the last. Sc2tog using the back loop of the last Sc and the next Sc from the top of your backdrop. Slst 1 and turn. Sk Slst.
5. Repeat 4 and 5, 2 more times.
6. Sc 4.
7. Repeat steps 4 – 7, 6 more times (You should have 7 stitches remaining.)
8. Repeat steps 4 and 5 one more time.
9. Fasten off. Leave a tail that is twice as long as your work. Cut yarn.
10. Attach a yarn needle to the yarn you just cut. Create the rod loops by folding each band over and attaching it neatly just below the top of the back of your wall art.
11. Secure and cut yarn. Weave in ends.



FILE: 11/E/COP/W/SOLD USD EDITIONAL/NO VENTAS

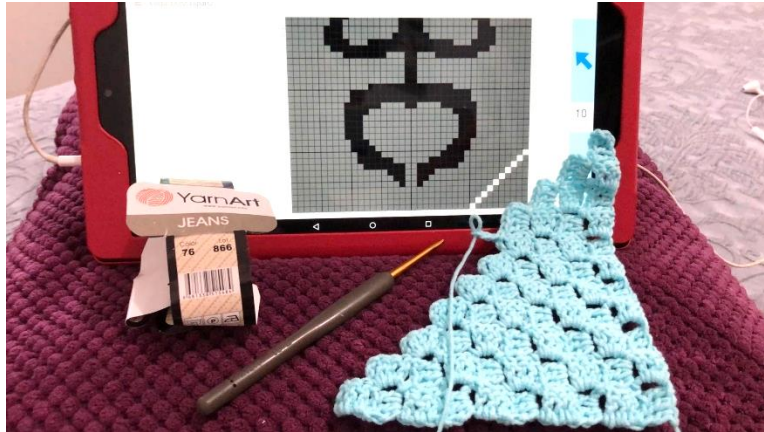


Photo 1: Beginning your wall hanging.

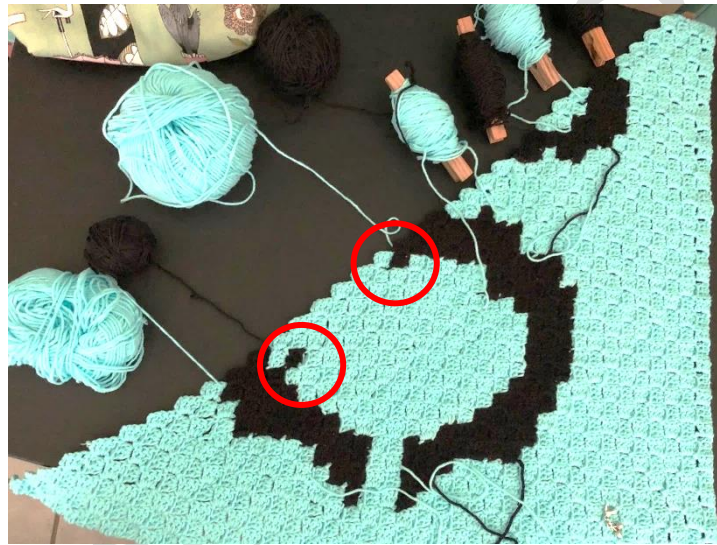


Photo 2: Showing the use of bobbins for yarn management. I recommend that you verify your work, every couple of rows, using the chart provided, to catch mistakes and avoid frogging. Obviously, I had to frog at this point in the picture.



Photo 3: This wall hanging is almost complete. Look at all those ends!